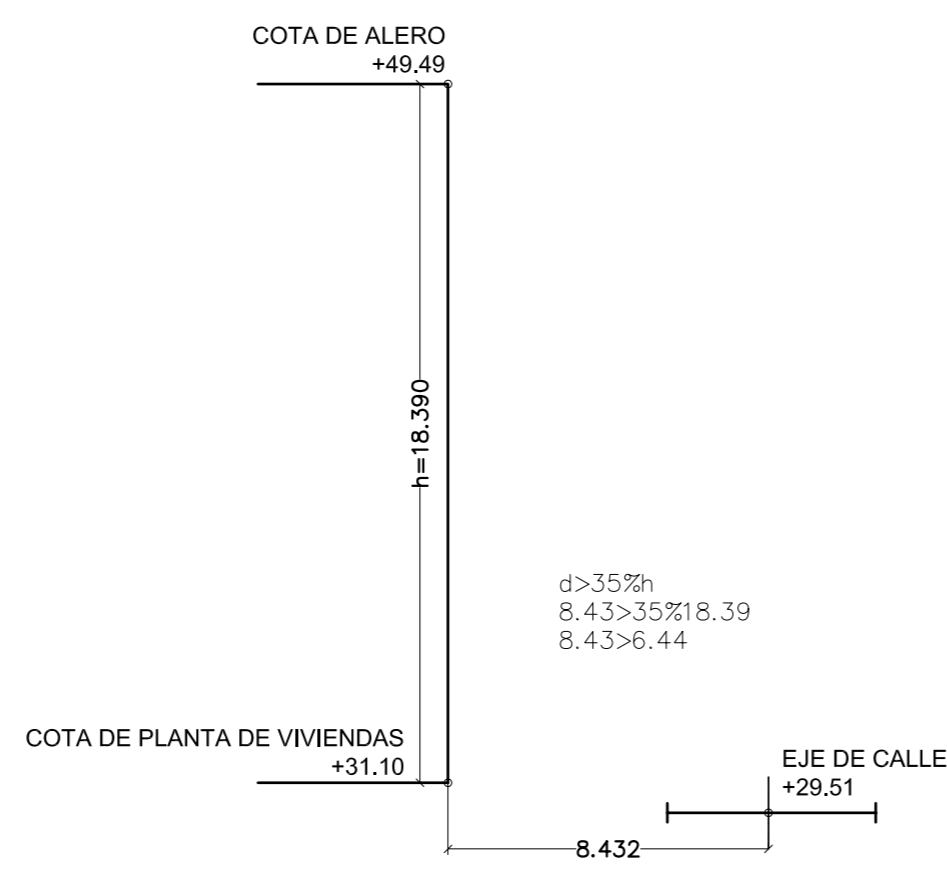
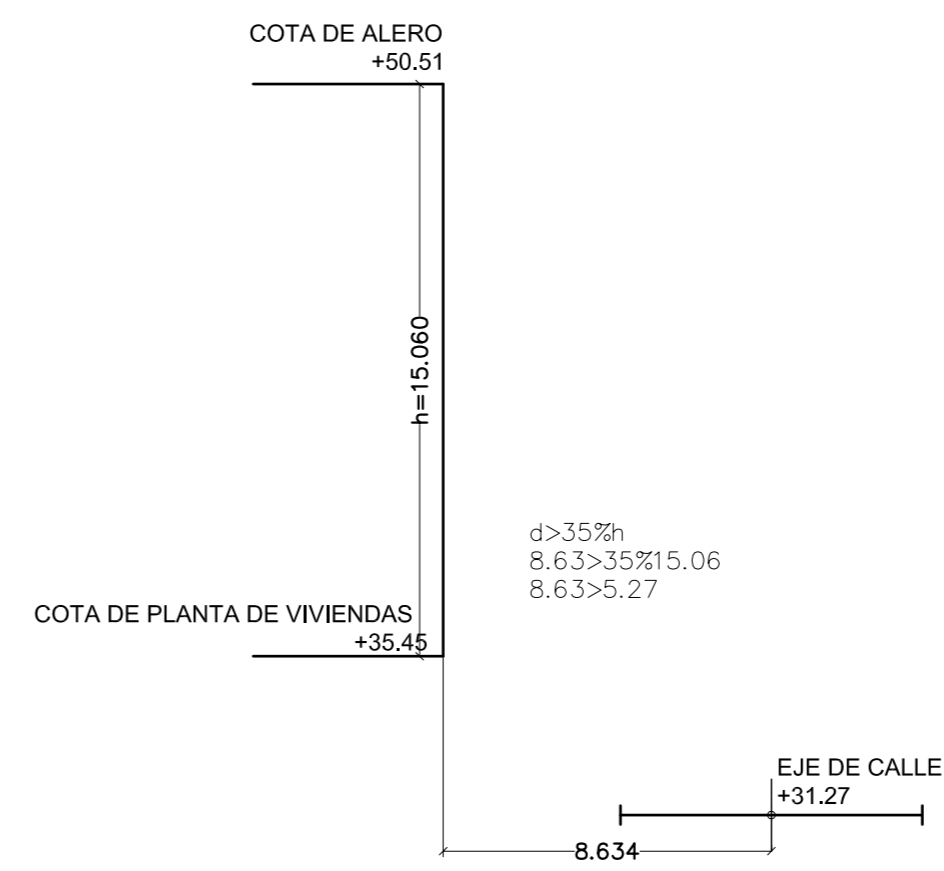


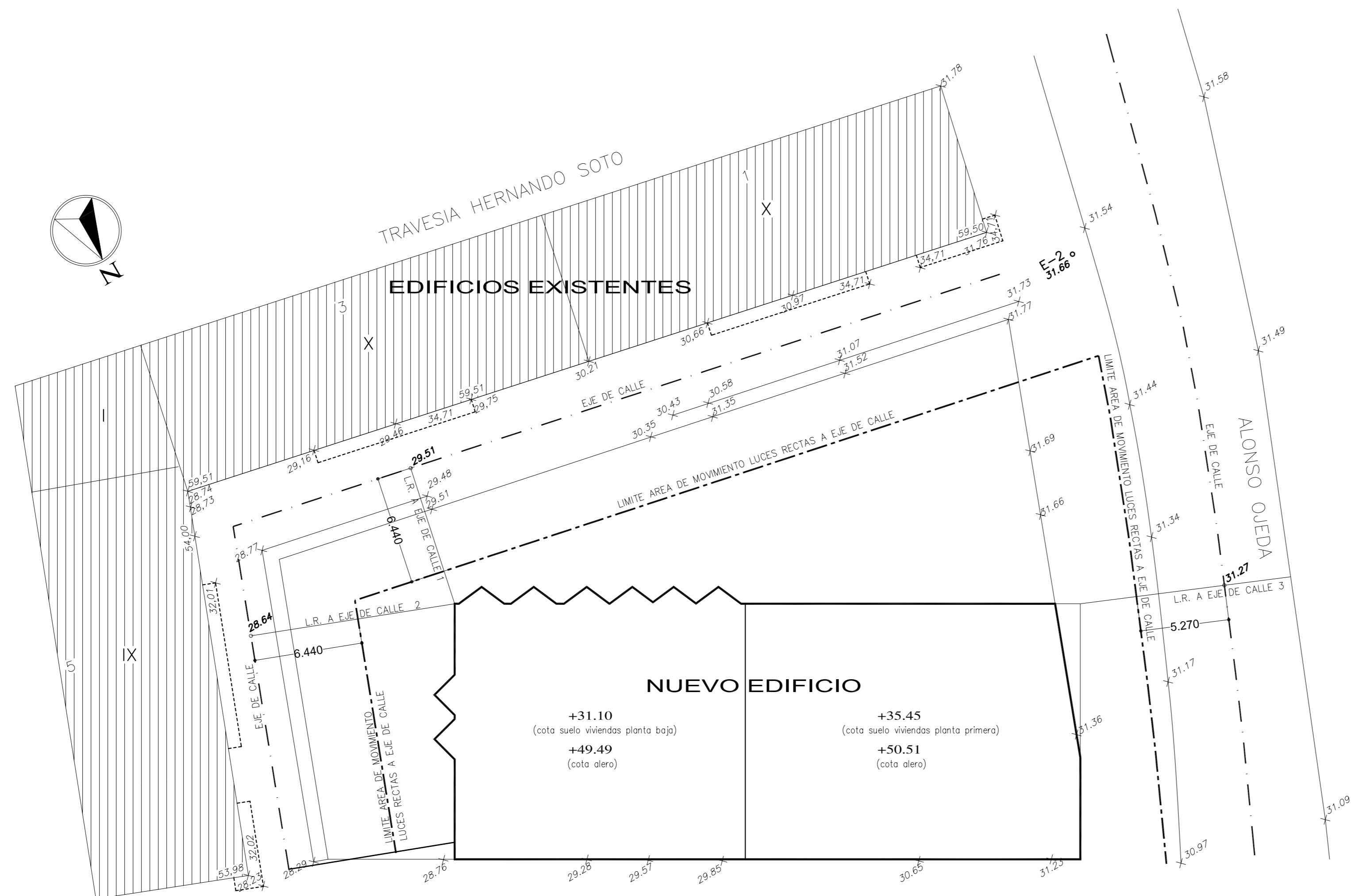
LUCES RECTAS A EJE DE CALLE 1

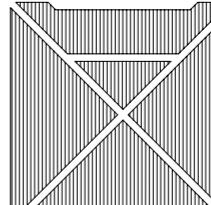
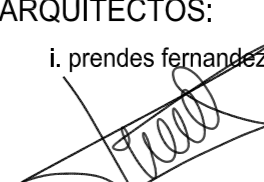
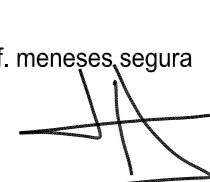


LUCES RECTAS A EJE DE CALLE 2



LUCES RECTAS A EJE DE CALLE 3



	PROYECTO: ESTUDIO DE DETALLE SITUACION: C/. ALONSO DE OJEDA, 9 - AVILÉS TITULAR: CONSTRUCCIONES AVILÉS, S.A.	
	ARQUITECTOS: i. prendes fernandez 	f. menseses segura 
ESCALAS: 1/200	PLANO DE: LUCES RECTAS A EJE DE CALLE	PLANO Nº 5